

SHANGHAI - SUZHOU - HANGZHOU, CHINA

5D4N

BOSSBABETRAVEL.MY | TRAVEL LIKE A BOSS



DAY 01

- Meet & Greet with our tour guide at Pudong International Airport
- SHANGHAI CITY TOUR
- check in at Shanghai hotel

DAY 03

- After breakfast, check out & proceed to :
- The Couple's Garden
- Silk Store (Shopping stop)
- Phoenix Mosque
- G20 City Balcony
- Sasseur Life Plaza Outlets
- Check in hotel & rest

DAY 05

- After breakfast, check out & proceed to :
- Jade Hall (shopping stop)
- Disney Town
- Wishing Star Park
- Transfer to airport

DAY 02

- After breakfast, check out and proceed to :
- Chenghuangmiao Business Circle
- Zigzag Bridge
- Xiao Tao Yuan Mosque
- Jinji Lake
- 'Oriental gate'
- Shantang Street
- Check in hotel & rest

DAY 04

- After breakfast, check out & proceed to :
- Cruise the West Lake
- Dragon Well Tea Plantation
- The Bund
- Nanjing Pedestrian Street
- Check in hotel & rest

PRICE DETAILS

SHANGHAI - SUZHOU - HANGZHOU, CHINA 5D4N

- 10 pax : RM 2,500/pax
- 15 pax : RM 2,300/pax
- 20 pax : RM 2,200/pax

PACKAGE INCLUDES

1. Airport transfer return
2. Accommodation with daily breakfast
3. HALAL meals as mentioned in the itinerary
4. One mineral water per day per person
5. Private transportation during tour
6. Entrance fees of sightseeing as mentioned in the itinerary
7. English speaking guide
8. Tipping to guide & driver

PACKAGE EXCLUDES

1. International flight ticket (purchasing service available)
2. Optional tour & Travel Insurance
3. Personal expenses ¹

BOSSBABE
TRAVEL & TOURS

SHANGHAI-SUZHOU-HANGZOU ITINERARY DAY 1



SHANGHAI CITY TOUR

- MEET & GREET WITH THE TOUR GUIDE AT PUDONG AIRPORT
- SHANGHAI CITY TOUR
- HOTEL CHECK IN AT SHANGHAI

WWW.BOSSBABETRAVEL.MY

SHANGHAI-SUZHOU-HANGZOU ITINERARY DAY 2



**CHENGHUANGMIAO
BUSINESS CENTRE**



XIAO TAO YUAN MOSQUE



ZIGZAG B BRIDGE



WWW.BOSSBABETRAVEL.MY

SHANGHAI-SUZHOU-HANGZOU ITINERARY DAY 2



JINJI LAKE



SHANTANG STREET

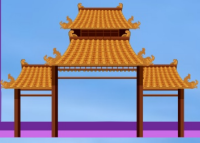


ORIENTAL GATE SUZHOU

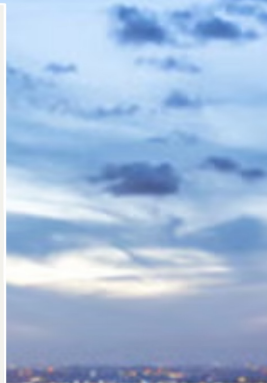


WWW.BOSSBABETRAVEL.MY

SHANGHAI-SUZHOU-HANGZOU ITINERARY DAY 3



**THE COUPLE'S
GARDEN**



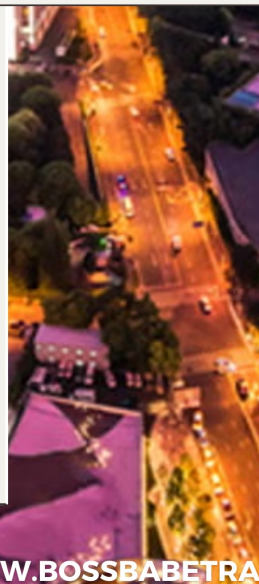
SILK STORE



THE PHOENIX MOSQUE



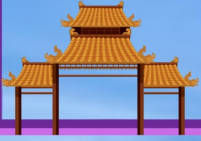
G20 CITY BALCONY



**SASSEUR LIFE
PLAZA OUTLET**

WWW.BOSSBABETRAVEL.MY

SHANGHAI-SUZHOU-HANGZOU ITINERARY DAY 4



**CRUISE THE WEST
LAKE**



**DRAGON WELL TEA
PLANTATION**



THE BUND



**NANJING PEDESTRIAN
STREET**

WWW.BOSSBABETRAVEL.MY

SHANGHAI-SUZHOU-HANGZOU ITINERARY DAY 5



DISNEY TOWN



**JADE HALL
(SHOPPING STOP)**

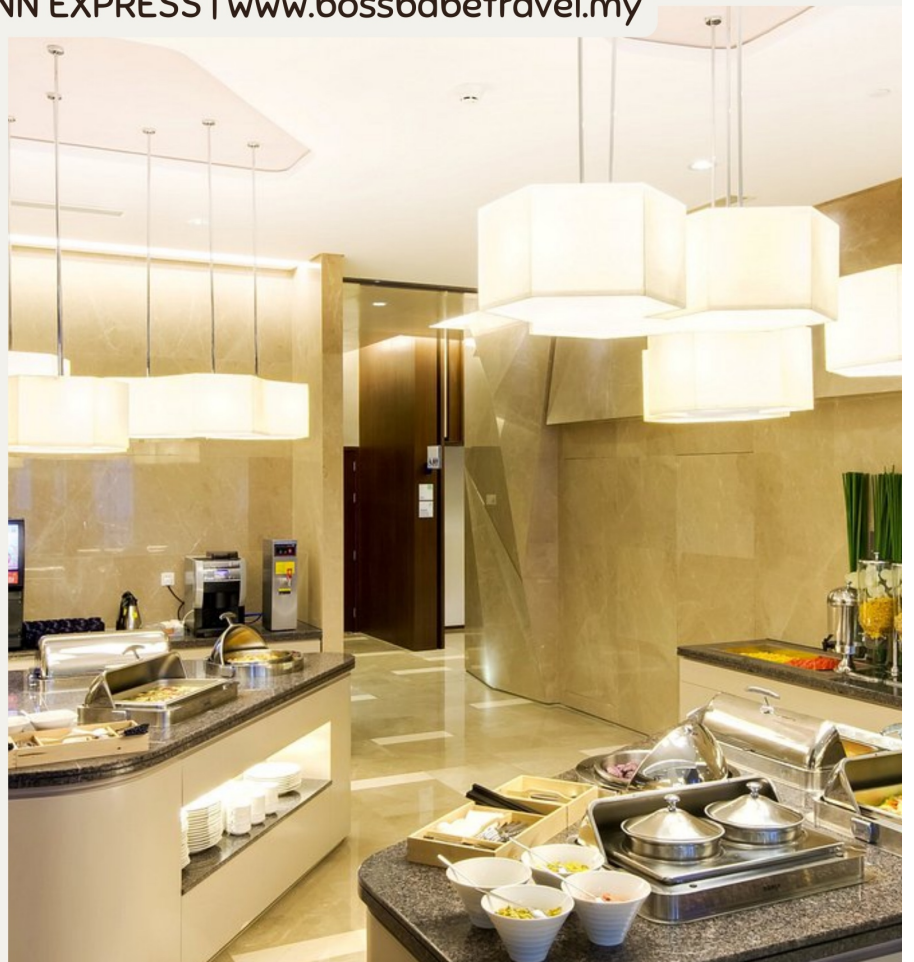
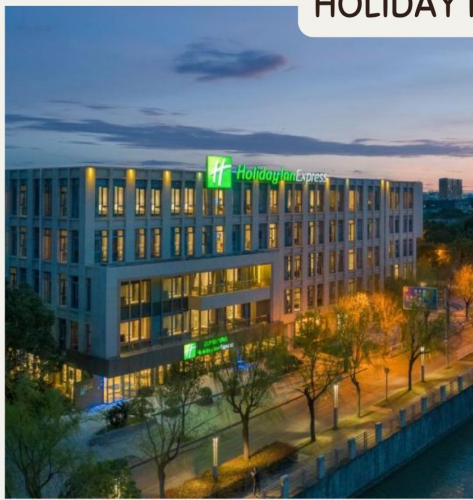


WISHING STAR PARK

WWW.BOSSBABETRAVEL.MY



HOLIDAY INN EXPRESS | www.bossbabetravel.my





GRACE HOTEL | www.bossbabetravel.my





LIANG AN INTERNATIONAL HOTEL | www.bossbabetravel.my

